



PrebbletonLife

PUBLISHED BY THE PREBBLETON COMMUNITY ASSOCIATION INC. (EST. 1975)

Kakaha Park Official Opening



Mayor Sam Broughton officially opened Kakaha Park on Sunday 11 June with local iwi representatives Te Taumata o Ngāi Tūāhuriri leading the Whakawatea (blessing). A good crowd was out to enjoy the sausage sizzle run by Prebbleton School, the soup tent and coffee cart. Prebbleton Football was on the sports fields and cyclists, young and old, braved the cool conditions.

THANK YOU

The Prebbleton Community Association Committee have been delighted with all the positive responses to our updated newsletter, Prebbleton Life. It is possible to obtain hard copies from Fresh Choice, Healthy Harvest, Prebbleton Pharmacy, Harcourts office and the two dairies on Springs Road. The publication can also be read on the Prebbleton Community Group Facebook page.

If you would like to receive a copy by email please send your email details to prebbletonlife@gmail.com and that would help save printing costs.



PHOTOS: Peter Grundy & Graeme Gemmill

The aims of the association

To promote, preserve and protect the interests of the residents of Prebbleton District.

To support the efforts of any person, persons, association, or any other bodies, who may in the opinion of the association be working for the benefit of the Prebbleton District.

To foster social activities within the Prebbleton District if necessary.

DISCLAIMER:

The articles contained in this newsletter do not necessarily represent the views of the Prebbleton Community Association. No liability is accepted for these views but every effort is made to ensure information is accurate at the time of printing. Responsibility for submitted information lies with the groups and advertisers. All articles are subject to the editors' discretion.

Publication Graphic Design:
Peter Grundy, Resolv Design

Association Committee Members

Graeme Gemmill (Chair)
Alastair Joyce (Treasurer)
Angela Hart (Secretary)
Graham Carpenter
Averil Carpenter
Angela Jones
Geoff Gilfedder
David Martin
Linda Martin
Natalie McLean
Jane Elms

Email contact:
prebbletoncommunityassn@gmail.com



A message from the Chair

Nau Mai Haere Mai - Welcome to Edition 5 of Prebbleton Life.

The shortest day has come and gone so we are now looking forward to longer days often with frosts but accompanying sunny days. The Matariki Star cluster is on the rise!

Kakaha Park was officially opened by the Mayor Sam Broughton on a cool June morning. The cups of hot soup, coffee and sausage sizzle were much appreciated.

Also of note at the new complex alongside the Change Rooms is a Defibrillator which has 24/7 access and an extensive bicycle and puncture repair stand.

Matariki Day (Friday July 14th) is looming fast and I would urge you to join with us to make this a special event for the Prebbleton Community calendar.

We would like to thank SDC and Fush for the financial contributions towards our Event being held at the School Hall from 1pm to 4pm.

The PCA are currently keeping a watching brief on developments regarding the Community Centre and have written to the SDC regarding township signage - see later articles..

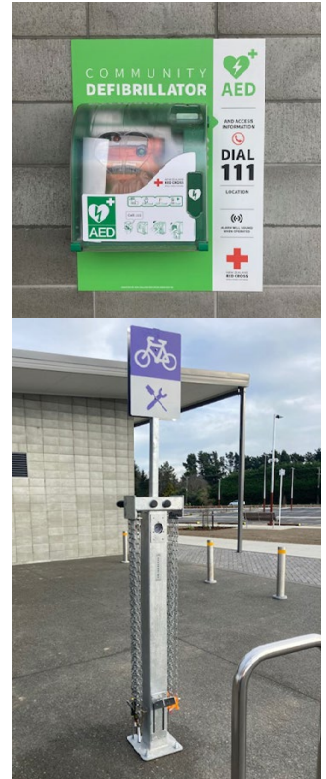
PCA meetings are held at 7pm on the 3rd Tuesday of every month at the Cottage. Our rules allow for a public forum to be available as part of each meeting; usually the first 15-30 minutes.

If you have any Community concerns please either bring these to one of our meetings or email the PCA Committee at prebbletoncommunityassn@gmail.com or phone me on 021 295 6590

Enjoy reading this month's edition.

Ka kite,

Graeme Gemmill



Saket Indian restaurant

Earlier this year the couple from Saket Indian restaurant were absent for about six weeks. They had returned to India as an engaged couple and returned as a married couple after two separate marriage ceremonies in India. We wish Suraj and Bhavya a long, happy and successful married life as Mr and Mrs Khatri. They would love you to join in the celebration by taking advantage of this discount voucher.

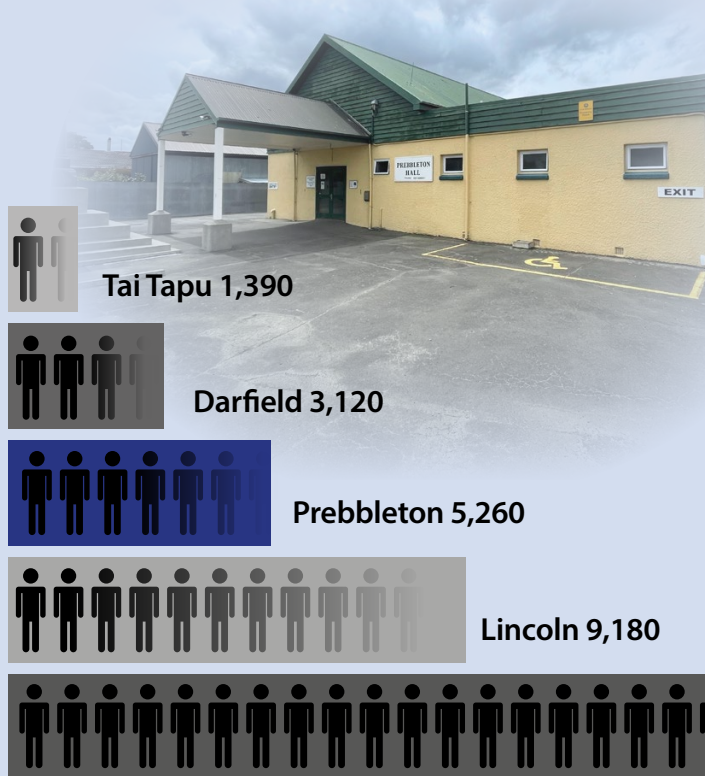


Future Prebbleton Community Centre

Prebbleton is named on the current 10 year plan for a new Community Centre to be built in 2025/26, and Community consultation for this will be happening soon.

It's probable that key stakeholder groups like the Prebbleton School, Prebbleton Sports Clubs, the Public Hall Committee, local Business owners and Prebbleton Community Association, will be consulted by Council, rather than individuals.

So if you have an opinion on this or want to know more about it, and you're not part of one of these groups, you could contact Selwyn District Council directly, or you could voice your views to Prebbleton Community Association which can liaise with SDC. You might even come to a meeting, where you can speak with our Deputy Mayor, Malcolm Lyall, who lives here in Prebbleton. Our meetings are held at the Prebbleton Cottage on the third Tuesday each month, starting at 7pm.



Selwyn District Council has responsibility to provide facilities for Selwyn residents, and does a great job, in an ever changing environment.

ROLLESTON is the major centre in Selwyn, with a population of about 28,000 and lots of facilities to meet their needs including a Community Centre, Te Ara Ātea (library/service centre), Selwyn Sports Centre and Selwyn Aquatics Centre. Capacity for hosting large events is huge, with capacity for crowds of more than 800 people at the Community Centre alone. Work on Rolleston's burgeoning town centre is an ongoing long term project for the Council.

DARFIELD with a population of around 3,120, has also been looked after. Darfield boasts a Swimming Pool, Library/Service Centre and a Community Centre with the ability to cater for more than 300 people at once. Planning is about to start for a \$15 - \$25M Sports and Recreation Centre to be built in 2029 (ref Selwyn Times May 17th).

Prebbleton shares the Springs Ward with Lincoln and Tai Tapu.

LINCOLN has a population of around 9,180, and its Events Centre and Library/Service Centre between them have capacity to cater for more than 1,000 people.

TAI TAPU has a population of around 680, but its wider district includes about 1,390 people. SDC has provided a Community Centre there with capacity for 550 people.

PREBBLETON has a population of about 5,260, it has grown very fast over the past few years, and like other places in Selwyn, is still growing pretty quickly. Prebbleton has the Community Cottage which caters for up to 30 people at a time. We do also have our community owned and run Public Hall (managed by volunteers), which can cater for up to 250 people at once, but this is on the register as an earthquake-prone building, so its lifespan as a public facility is probably limited.

Data: Statistics New Zealand estimates June 2022

VENUES FOR HIRE

Prebbleton Hall

617 Springs Roads
 Enquiries to:
prebbleton.hall20@gmail.com
 Phone 022 0488451
 AVAILABLE FOR: Social functions,
 Classes & Clubs, and Individual use.



Prebbleton Community Cottage

Corner Blakes & Springs Roads
 Bookings and enquiries through
 Selwyn District Council
 Phone 03 347 1866
 or email bookings@selwyn.govt.nz

Prebbleton Nature Park

By Sandra Serra



*Children in the water
at the shingle pit 1928*



PREBBLETON HERITAGE Inc.
prebbletonheritage@gmail.com

The Prebbleton Nature Park as we know it is situated on land once referred to as Reserve 202 where the East Lincoln Road Board had its offices. Their first meeting was held at the home of Mr GLYDE, the chairman, in February 1864 before moving to the Reserve site. Road Boards were elected by residents, who paid levies to fund the work, to oversee the forming and maintenance of roads, and the construction of culverts and bridges. Locally, the shingle for this work was taken from Reserve 202, eventually forming the pit area we see today.

In February 1874 tenders were sought for the building of six immigration cottages, four at Prebbleton and two at Lincoln, then later in the year further tenders were called for the painting of the cottages at Prebbleton. These cottages were for housing immigrants to work in the district, and in May 1874 two families were sent to occupy the cottages at Prebbleton with others arriving in 1878. At this time the Reserve area was about 10 acres.

It is believed the last of the immigrant cottages was demolished in the late 1930's.

Also in 1878, land "near the cottages" was set aside for a pound to contain stray animals found wandering. Mr William ROSSER was appointed as pound keeper and was replaced when he died in 1883 by Robert WEATHERALL.

The extraction of gravel went on for many years, gradually deepening the pit as more gravel was taken with water accumulating in the lower levels.

1957 saw the pit opened for the dumping of rubbish but was closed again in 1959, although it may have been used again in later years. The pound closed around 1974 when that part of the reserve was sold, reducing the area by half.

The pit was used for grazing until 2002 when Michelle Frey, a student at Lincoln University, drew up a concept plan to develop the 2.6 hectares into a nature reserve, and the plan was adopted by the Selwyn District Council. Landscape architect, Jo Sutherland, drew up the design and work began in 2004 with the removal of larger items of rubbish, clearing the gorse and broom which covered the site and the removal of some larger trees. The first planting took place that year, although plants struggled to grow with lack of an adequate watering system, and rabbits taking their toll.

Progress was made with volunteers working under the guidance of Jim HUTTON and Rona RYAN and on 11 September 2005 an open day was held with approx. 3000 plants having been planted. All the plants are natives, Canterbury sourced,



Immigrant cottage circa 1895



2004 before work started on the park

with the view that it would be an area of vegetation similar to what was here before the land was first cleared.

In 2012, to mark 150 years of the formation of the town, a commemorative plaque was unveiled, and a Totara tree, donated by Tim and Hamish PREBBLE, was planted. The cover for the unveiling was provided by Ngai Tahu with children from the Playcentre singing to the tree. This was just one of many events which took place to mark the 150 years.

Work continued and in 2014 the project was recognised with the Canterbury/Aoraki Conservation Board Award – Te Waka o Aoraki.

Nature is now doing much of the work with taller trees providing shelter and allowing self-seeded plants to become established. Birds and other wildlife are attracted to both the bush and the water ponding in the lower areas.

There is development work still going on which will continue to enhance the park, making it a pleasant place to visit and wander around. If you haven't visited the Nature Park yet, please do. There is a carpark on Springs Road with an information board and toilet block, and walking access from Farthing Drive in the Sterling Park subdivision. Take a picnic...and a whistle to round up the troops!



Unveiling the commemorative plaque Jim Hutton and Rona Ryan



2014 presentation of Te Waka o Aoraki award L-R Ian Spellerbeg, Michele Frey, Jim Hutton, Rona Ryan, Marian Frey, David Jarvis

EDITORS NOTE:

In our June publication we featured “nature on our doorstep” with an article and photographs from a visit to Broadfield Garden, a 7-minute drive from Prebbleton. We are delighted that Prebbleton Heritage have provided this follow-up article about the origins and development of Prebbleton’s own nature park.



A man's best friend

In 1941, the American poet, Ogden Nash, well-known for writing light verse, wrote about the dog,

***The dog is man's best friend
He has a tail on one end
Up in front he has teeth
And four legs underneath***

For thousands of years, dogs have helped man in many ways and have been respected for their companionship and willingness to live in harmony with man. Nevertheless, from watching some tv programmes it is obvious that not all dog owners treat their dogs properly.

Selwyn District Council, in its Dog Control Legislation, sets out the requirements for dog owners. According to their website, within the district “half of all households have at least one dog, with more than 16,000 dogs in total.”

Despite well documented requirements it seems that many owners openly flout those laws, possibly because they have never taken the trouble to find out what their responsibilities are. Within Prebbleton it is important to be aware of and comply with clause 6 of the Dog Control Bylaw 2012 which states that dogs should be on a leash in: “Restricted Speed Zones” and “Township Zones” including roads and footpaths.

So, from a Prebbleton perspective, all dogs should be walked on a leash, unless they are in an off-leash area and their faeces should be cleared away. How many times have you been walking and had to sidestep dog poo or noticed that some owner hasn't cleaned up? It seems to make sense that if a dog owner wishes to allow their dog to run off-leash, the place to do it is at the dog parks at the Kakaha Park in Leadleys Road or Prebbleton Domain.

WHAT'S ON IN JULY

Saturday 1 July

Working Bee: 1st Saturday of the month
Prebbleton Nature Park, 9.00am - midday
Ask for David Jarvis

Tues 11th July 7.30pm

Prebbleton Heritage Inc. AGM - Prebbleton Hall

Sat 1 to Sun 16 July

School holidays

Friday 14th July 1-4 pm

MATARIKI DAY EVENT

A free family event by the Prebbleton Community Association to celebrate Matariki. Prebbleton Jnr Kapa Haka and Ignite Dance will be performing. Fush have given us some excellent spot prizes and there is Flax weaving for over 13 and activities for all ages. Coffee Cart - \$3 coffees for gold card holders! Friday 14 July 1-4 pm - Prebbleton School Hall.

PREBBLETON
MATARIKI
Family Event

Ururangi
The winds

Waipunaārangī
The rains

Tupuārangī
Food sources from above

Hiwaiterangi
Prosperity and future

Tupuānuku
Food sources from below

Waitā
The ocean

Waitī
Fresh water

Matariki
Health and well-being

Pōhutukawa

FRIDAY 14 JULY 2023
WORKSHOPS | KAPA HAKA | DANCE
1 – 4 PM
FREE CAKE, FREE ACTIVITIES & SPOT PRIZES
PREBBLETON SCHOOL HALL
CNR BLAKE'S AND SPRING'S ROAD

Lincoln Envirotown Trust

KidsFest – Friends in the Forest

Friday 7th July 10 am to 12.30 pm
Lincoln Event Centre

Book tickets through Humanitix

<https://events.humanitix.com/kidsfest-forest>

Come and meet your Friends in the Forest through enjoyable craft activities, exciting science demonstrations and a forest tunnel for younger kids. High School students will help you discover what lives or grows in the bush and how you can look after your Friends in the Forest. Ages 3-12.

Looking After Your Roses

Saturday 15th July, 10.30 am to 11.30 am

Lincoln Community Garden (behind the old Maternity Hospital), James Street, Lincoln

A basic workshop on pruning and caring for your roses. Contact Ruth, at ruth.wood@xtra.co.nz or phone 021 074 3905

Selwyn Schools' Waste Art Competition

The deadline for entries is Monday 14th August 2023 events.humanitix.com/selwyn-waste-art-2023 or contact, projectmanagerlet@gmail.com

Create a piece of art assembled or constructed from previously used materials that otherwise would have likely gone to a landfill, the artwork is aimed at making us reconsider our views on rubbish and reusing. Open to intermediate and high school ages.

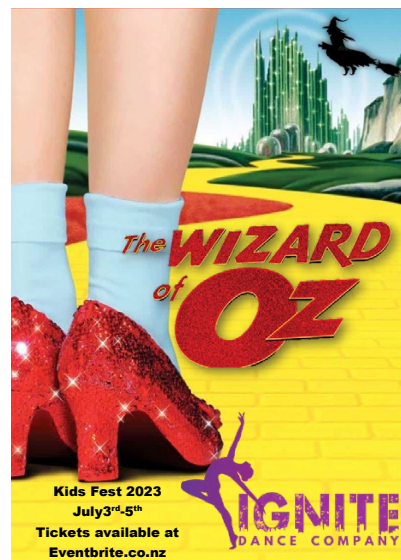


Ignite Dance studio is proud to present: The Wizard of Oz. Follow the yellow brick road!

Mon 3 to Wed 5 July
(7 session times)
Community Hall
617 Springs Road

A modern take on a classic tale of friendship, adventure and over coming fears.

Come on a journey with Dorothy as she travels to the Wizard. Meet munchkins, a scarecrow, a tinman and a lion. Confronting the evil Wicked witch and her band of flying monkeys. Our story teaches us to have courage, heart, belief in ourselves and that there is no place like home! So, come with us as we follow the yellow brick road, dancing, singing, friendships and trials as we explore the magical world of Oz. Get your tickets now, and come and support all of our performers as they do what they love. Tickets at eventbrite.co.nz



NEWS FROM YOUR LOCAL GROUPS

Prebbleton Heritage Inc. AGM

Tuesday 11th July 2023 at 7.30pm

In the supper room at the Prebbleton Hall.

Supper to follow.

We will also have a collection of aerial photographs of Prebbleton on display.

All welcome to come and hear what we have been doing and our plans for the future.

Friday Friends

We all enjoyed an afternoon hearing from Alison and Cyril Fifield about their recent holiday in the Chatham Islands. In July our guest speaker will be Steve Bush and he will tell us about Trees for Canterbury and the work they do. In August we are looking forward to welcoming Dave Adams back to talk to us – this time about daffodils.

We meet at 2 p.m. on the last Friday of each month in Tosswill Lounge at All Saints Anglican Church on Blakes Road. Everyone is most welcome to join us – no joining fee, you just come when you can. We do run raffles to help cover the costs.

For more information, please contact Daphne McAven 349 - 8886

Women's Institute

Several of our members attended the National A.G.M. in Timaru last month. It was a chance for them to catch up with old friends and make new ones. By the reports we received it was a fun weekend with a lot of laughter. We welcome new members to our meetings usually on the 4th Tuesday of each month in the supper room of the Prebbleton Public Hall at 1 p.m. It would be a good idea to check because sometimes we have an outing and are not at the hall. You do not have to be a knitter or into craft work – everyone has talents that can be used to help others. And we do have a lot of chat and laughter.

If you would like to know more, please contact Daphne McAven 349 - 8886

Justices of the Peace in Prebbleton

Clive Foster 027 435 0454

Edwin Boyce 027 292 7042

Geoff Cain 027 432 1153

Patrick Nicholas 027 435 9666

Barbara McLeod 027 297 7722

Vanessa Thompson 021 999 138

The "Find a JP" website will allow you to check details including availability of each JP.

Early Years Whanau Centre (EYWC) – Ko Taku Reo Deaf Education

The EYWC is excited to launch a new Prebbleton Playgroup for Deaf and hard-of-hearing preschoolers and their whānau on Mondays and Wednesdays, located at Prebbleton Plunket, 3 William Street, 10 am - 12noon. We also offer a Playgroup at Ko Taku Reo Sumner, 38 Truro Street on Tuesdays and Thursdays, 10 am – 12 noon.

We have a team of Teachers of the Deaf, Speech Language Therapists, and a Deaf New Zealand Sign Language (NZSL) Tutor supporting families during the Playgroup with techniques and strategies for developing communication skills. The Playgroup allows time for families to form relationships, support each other and identify any resources they need to meet specific needs and concerns. Parent group times usually include an opportunity to learn NZSL with a Deaf NZSL Tutor.

We welcome enrolments aged 0-6 years who are Deaf and hard-of-hearing (unilateral and bilateral), their preschool siblings, as well as Children of Deaf adults (CoDA). Parents/whānau attend Playgroup with their child and are encouraged to work in partnership with the team in all areas of their child's development. If you would like to learn more and are interested in enrolling, please contact us.

**Tina Harrison-
Early Years Programme Lead
tina.harrison@kotakureo.school.nz
027 228 0470**



The Hidden Village

Our Association has written to the SDC with respect to the beautification of the entrances to Prebbleton and Township signage.

DIRECTORY OF GROUPS & ACTIVITIES

SPORTS GROUPS

Prebbleton Rugby

Sarah Forster
ph 021 237 7344
secretary@prfc.co.nz

Prebbleton Tennis

Gill O'Connell
ph 027 276 1506
prebbletontennis@gmail.com

Prebbleton Cricket

Tony Grimwood
021 0886 5959
tony.grimwood@gmail.com

Prebbleton Indoor Bowls

John Hamilton
03 344 1503
Wednesdays
March to September
7:30pm
Prebbleton Public Hall

Prebbleton Netball

prebbletonnetball@outlook.com
Leanna Singleton
Club Secretary

Prebbleton Football

Shannon Gilmore
ph 027 579 8811
admin@prebbletonfootball.co.nz



RECREATIONAL GROUPS

TAI CHI

Gai Tangney
027 827 2791
tangneyfamily@gmail.com
Prebbleton Public Hall –
Mondays 10am - 11am

ZUMBA

Jonelle Bowman
021 254 0186
r_jbowman@xtra.co.nz
Prebbleton Public Hall –
Thursdays 9am – 10am

Prebbleton Okinawa Goju Ryu KARATE

Geoff Blokland
021 206 3413
geebee101@gmail.com
Prebbleton Public Hall –
Thursdays 6pm – 8pm

GKR Karate

Jessica Patterson
021 030 8376
region22nz@gkrkarate.com
Prebbleton School Hall
Mondays 6.15pm – 7.45pm
and Fridays 6pm – 8pm

Prebbleton Walking Group

Every Tuesday 9:30am-
Outside All Saints Church

Christchurch Keyboard Club

Shirley Hamilton
shirviv@xtra.co.nz
Prebbleton Public Hall
4th Wednesday of each month
11am – 2pm

Prebbleton Women's Institute

4th Tuesday of every month
1:00pm
Prebbleton Public Hall
Daphne McAven 349 - 8886

Friday Friends

Last Friday of every month
2:00pm
All Saints' Tosswill Lounge
Daphne McAven 349 - 8886

Prebbleton Heritage

Contact: Lindsay or
Sandra ph 349 3806
prebbletonheritage@gmail.com

Ignite Dance

Kim Glover
ph 021 927 899
kimtheresaglover07@gmail.com
Prebbleton Public Hall - Mon, Tues
& Wed after 3.30 pm

Sing and Sign

For 6 – 14 months
old children
All Saints Tosswill Lounge
Thursdays 1pm – 2pm
Booking required
singandsign.christchurch@gmail.
com

Early Years Whanau Centre (EYWC) - KO Taku Reo Deaf Education

Mondays and Wednesdays
10am - 12noon
Prebbleton Plunket Rooms 3
William Street
Tina Harrison 027 228 0470
tina.harrison@kotakureo.school.nz



Kakaha Park Sunday 11 June